



Budget Basics: Community Services for Seniors & People with Disabilities



FY 2019

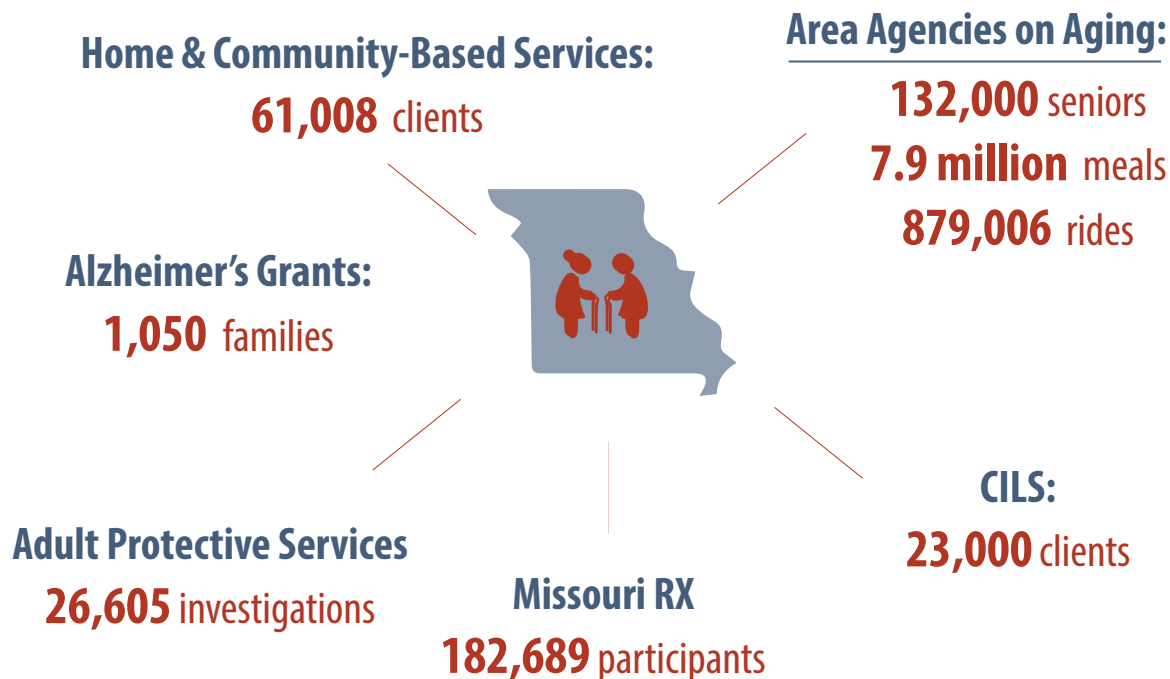
**An introduction to Missouri's
funding for services for
seniors & people with disabilities**

Community Services for Seniors & People with Disabilities

Missouri provides an array of services that collectively seek to promote the health, independence and safety of Missouri seniors and people with disabilities. These programs are designed to help all Missourians remain in their own home and to fully participate in and contribute to their communities.

Benefits of community based services:¹

- Home and community based services (HCBS) cost less than institutional care.
- HCBS promote independence and keep Missourians in their own home.
 - HCBS provide support and relief to family caregivers.

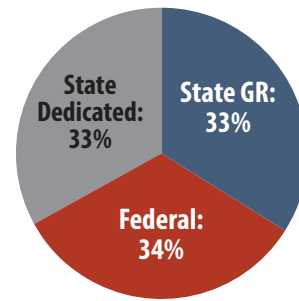


This primer is intended to serve as a guide for those who care about programs that serve Missouri's seniors and people with disabilities, and to increase the transparency of the budget by providing information on where key programs can be found in the budget bills. This primer also identifies the major programs that serve seniors & people with disabilities in Missouri. **Amounts included are Appropriated and reflect Gubernatorial vetoes, but not any mid-year restrictions that may have been made.**

Budget Basics

Each year the state takes in and spends approximately \$28 billion.

- About one third of the funds come from the federal government for very specific purposes.
- Another third is state revenue dedicated to specific state purposes, like the fuel tax, which is dedicated to transportation.
- Lawmakers have the most authority to allocate the final third, referred to as General Revenue.



Community-based senior services in Missouri are housed within:

- Department of Health & Senior Services (DHSS) – Senior and Disability Services (SDS) [HB 10]
- Department of Health & Senior Services (DHSS) – Division of Regulation and Licensure [HB 10]
- Department of Social Services (DSS) – MOHealthnet [HB 11]
- Department of Transportation (DOT) [HB 4]
- Department of Elementary and Secondary Education (DESE). [HB 2]

In order to track appropriations for a specific program, one must locate the appropriate budget bill and section number. (<https://oa.mo.gov/budget-planning/>)

Section # 11.235

The digits before the decimal indicate the bill number.

The numbers after the decimal show the section of that budget bill

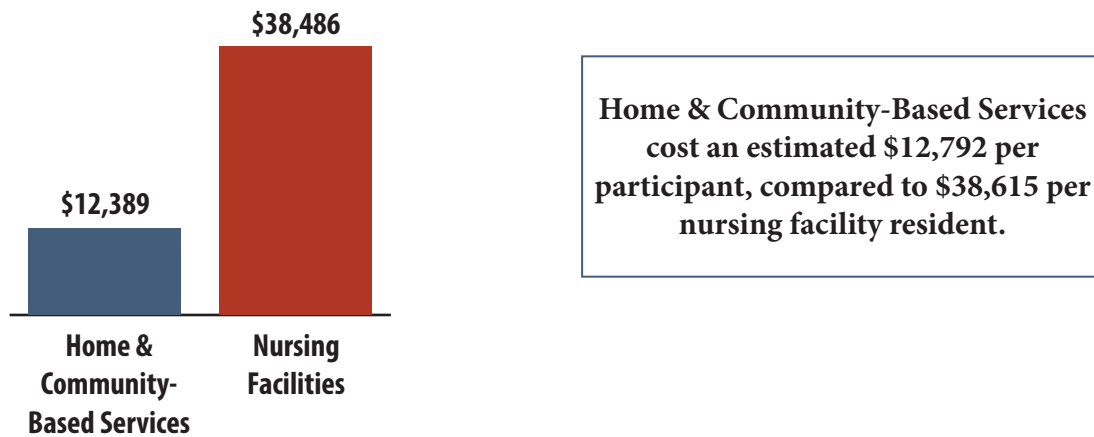
See Appendix for a detailed list of specific senior service programs, relevant section numbers, and FY2019 funding levels and sources.

Unless otherwise noted, all data on funding levels & sources, eligibility criteria, and program enrollment & efficacy were obtained from the 2020 Department Budget Requests through the Office of Administration, Division of Budget Planning <https://oa.mo.gov/>.

Home and Community-Based Long Term Care

Over the past several decades, the provision of long-term care has shifted from primarily institutional settings to a heavier reliance on care provided within the home and community. This is due in part to changing preferences as well as to the Supreme Court's 1999 Olmstead decision which seeks to prevent the unlawful segregation of people with disabilities in institutions and promotes community living.²

In FY2019, DHHS is projected to serve 61,008 Missourians in their own homes.



Home and Community-Based Services (HCBS) afford Medicaid-eligible seniors and adults with physical disabilities control and access to a full array of long-term services and supports in the community that promote independence, health, and quality of life, including:

- personal care & nurse visits
- adult day & respite care
- homemaker services & home delivered meals adaptive equipment

CHANGES TO HCBS & CDS FY2018

- Eligibility for HCBS raised from 21 to 24 points on assessment scale (patients who receive few than 24 points will no longer qualify for HCBS).
- Cost of consumer directed services may not exceed 60% of the cost of care in a nursing facility.

Money Follows the Person (MFP) is a demonstration grant that has transitioned over 1,600 individuals who are elderly, disabled, or who have developmental disabilities from nursing facilities to HCBS services at a cost savings of over \$32,000 per person³. This grant is set to expire in September 2020.

Community-Based Supports

Area Agencies on Aging (AAAs) provide supportive services to seniors through provisions of the Older Americans Act of 1965.⁴ The services, which are administered by ten Area Agencies on Aging, are funded by a patchwork of federal, state and local funding, and are available to seniors statewide (with some local variations).

In FY2017 the AAAs provided 10 million units of services to nearly 132,000 seniors in Missouri.

What do AAAs do?



		Units	Distinct Clients
Keep seniors in their homes and community	Personal Care	28,387	668
	Homemaker	118,632	2,368
	Case Management	47,185	14,725
	Transportation	879,006	15,600
Provide nutritious meals	Home Delivered Meals	5,929,434	36,667
	Congregate Meals	2,012,318	61,154
Support family caregivers	Assistance	7,217	2,500
	Respite	78,220	713
Promote health & well-being	Exercise	67,091	2,459
	Screenings	13,082	2,630
	Medication Management	1,678	486
Prevent and detect elder abuse	Elder Abuse	118	116
	Legal Assistance	9,228	1,388

Centers for Independent Living (CILS) provide supportive services to Missourians with disabilities to maintain their independence and remain in their homes and communities.

The 22 CILS are projected to serve 23,000 Missourians in FY2019.

Naturally Occurring Retirement Communities (NORCS) establish programs, supports, and services within local communities that allow seniors in designated geographic areas with high proportions of older adults to remain in the community rather than entering a long-term care facility. These programs support the healthy aging of older adults through increased community involvement and easy access to services that include transportation, socialization and education, assistance with household maintenance, healthcare, and security.

It is projected that in FY2019 this program will reach 1,600 seniors.

Alzheimer's grants provide funding for organizations that serve patients and families dealing with Alzheimer's and other dementia-related diseases, to provide caregiver respite, peer-to-peer counseling, and caregiver safety training programs such as those that prevent wandering. This program will serve 1,050 families in FY2018.

The Missouri Rx Plan provides pharmaceutical benefits to elderly and disabled Missourians who are struggling financially and facilitates coordination of benefits between the Missouri Rx plan and the federal Medicare Part D drug benefit program.



**182,689 MO Rx
members monthly**

projected monthly average

Missouri Rx Eligibility & Benefits

- Available to elderly and disabled Missourians who are eligible for Medicare and Medicaid (dual eligibles)
- Covers 50% of members' out of pocket costs (after Medicare Prescription Drug Plan payment).
- Does not cover Medicare Part D premiums

SB139:

- Beginning July 1st, 2017 Missourians eligible for Medicare only (non-dual eligibles) are no longer eligible for MO Rx.
- As a result, nearly 58,000 seniors lost prescription drug coverage through MO Rx—or nearly 1 in 4 enrollees.

Transportation

Senior and disabled transit provides funding for essential transportation programs, including the purchase of vehicles for non-profit agencies serving senior citizens and persons with disabilities that have limited access to their communities where public transportation is unavailable or insufficient.

Senior and disabled transit provides 2.7 million trips annually.

The Missouri Elderly and Handicapped Transportation Assistance Program (MEHTAP) partially matches the local share of funds used to provide essential transportation programs for seniors and/or persons with disabilities.

The MEHTAP program provides 4.4 million rides annually.

Employment

Vocational Rehabilitation Services helps individuals with physical or mental disabilities to choose, prepare for, and engage in employment in order to maximize independence and integration into the community. **This program will serve 28,000 individuals in FY2019.**

Sheltered workshops provide employment to adults with severe disabilities who are unable to secure employment. There are 90 sheltered workshops in Missouri that are reimbursed for each employee at a rate of \$105 per work week. **This program will provide employment for approximately 6,000 individuals in FY2019.**

Protective Services

Adult Protective Services provides short-term intervention services to eligible adults who have been victims of abuse, neglect, or financial exploitation. These individuals can obtain temporary and emergency services to assist them in remaining safely in their homes and communities including case management follow-up; emergency food, shelter, and caregiver services; financial and economic assistance; legal assistance; medical care; home support and temporary housing; and social and educational services.

In FY2018 it is estimated that APS will complete 26,605 investigations into abuse or neglect.

Funding for field staff who investigate claims of abuse and neglect is housed in the program operation budget for the Division of Senior and Disability Services. This budget also includes the **Long-Term Care Ombudsmen Program** that oversees advocacy for the rights of long-term care residents and the **Central Registry Unit** (a hotline that registers complaints of abuse, neglect, and exploitation of seniors and the disabled).

The Family Care Safety Registry provides background screenings to employers and individuals or families who want to hire a caregiver for a child or disabled or senior adult.

Regulatory and licensing programs provide an essential service in ensuring that institutional and home based long-term care services in Missouri meet quality and safety standards.

- **The Board of Nursing Home Administrators** consists of ten individuals appointed by the governor who are responsible for establishing qualifications for licensure, testing standards, and license renewal requirements of individuals who serve as a licensed administrator in a skilled, intermediate care, assisted living facility, or residential care facility.
- **Home Care and Rehabilitative Standards** inspects home health and hospice agencies to assure state and federal requirements are met, patient rights are protected and promoted, and quality care is provided.
- **The Long Term Care Program** licenses and conducts inspections of long-term care facilities and adult day care facilities; reviews and approves applications; completes building plan reviews; administers the certified nurse aide, certified medication technician, and level one medication aide programs; and takes enforcement actions as needed.

Appendix

Amounts shown are Appropriated and reflect Gubernatorial vetoes, but do not include any mid-year restrictions that may have been made.

Program	Department Budget	Budget Section	FY19 GR	FY19 Federal	FY19 Other	FY19 TOTAL
Senior and Disability Services Program Operations	DHSS	10.800	\$11,608,630	\$13,177,420	\$0	\$24,786,050
Medicaid Home and Community-Based Services (HCBS)	DHHS	10.810	\$148,666,259	\$278,830,630	\$0	\$427,496,889
Medicaid Home and Community-Based Services (CDS)	DHHS	10.806	\$168,783,054	\$315,490,637	\$0	\$484,273,691
Money Follows the Person	DSS	11.430	\$0	\$532,549	\$0	\$532,549
OAA - AAAs core	DHHS	10.815	\$2,074,704	\$27,544,641	\$0	\$29,619,345
OAA - AAAs meals on wheels	DHHS	10.815	\$9,731,016	\$6,955,359	\$62,958	\$16,749,333
NORCS	DHHS	10.825	\$300,000	\$0	\$0	\$300,000
Alzheimer's grants	DHHS	10.820	\$550,000	\$0	\$0	\$550,000
Missouri RX Plan	DSS	11.435	\$6,715,564	\$0	\$4,655,326	\$11,370,890
Senior & Disabled Transit	DOT	4.455	\$0	\$10,600,000	\$0	\$10,600,000
Missouri Elderly and Handicapped Transportation Assistance Program (ME-HTAP)	DOT	4.460	\$1,194,129	\$0	\$1,274,478	\$2,468,607
Centers for Independent Living (CILS)	DESE	2.160	\$2,860,001	\$1,292,546	\$390,556	\$4,543,103
Sheltered Workshops	DESE	2.175	\$26,041,961	\$0	\$0	\$26,041,961
Vocational Rehabilitation Services	DESE	2.150	\$14,191,795	\$52,395,734	\$1,400,000	\$67,987,529
Adult Protective Services	DHHS	10.805	\$299,925	\$167,028	\$0	\$466,953
Family Care Safety Registry	DHHS	10.900	\$759,937	\$218,415	\$0	\$978,352
Board of Nursing Home Administrators	DHHS	10.900	\$110,950	\$11,825	\$0	\$122,775
Long Term Care Program	DHHS	10.900	\$4,122,931	\$8,569,506	\$3,617,151	\$16,309,588

Notes

1. Fox-Grage, W., & Walls, J. (2013). State studies find home and community-based services to be cost-effective. Spotlight. Washington, DC: AARP Public Policy Institute.
2. MO DMH “The Olmstead Fact Sheet” <https://dmh.mo.gov/dd/olmstead/factsheet.html>
3. *Report of the HB343 Money Follows the Person Sustainability Committee*, online at: <https://dss.mo.gov/mhd/general/pdf/HB343-Sustainability-Report.pdf>
4. *The Older Americans Act: Aging Well Since 1965*, online at: <http://www.ma4web.org/wp-content/uploads/2015/06/OAA-Brief-Final.pdf>