



# Budget Basics: Family & Economic Security



## FY 2018

**An introduction to Missouri's  
family & economic security  
services and funding**

# Family & Economic Security

Missouri's budget supports a number of services that are aimed at promoting healthy and stable families, individuals, and communities. Very little general revenue is used to fund these programs and most are funded entirely with federal dollars.

For the purposes of this primer, family & economic security programs are defined as those which serve struggling workers, seniors, or families with children or are broadly aimed at improving the health and stability of communities.

## Temporary Assistance for Needy Families (TANF): <sup>1</sup>

**14,236** families

**25,108** children

## Child Support:

**340,000** cases

## Community Action Agencies:

**250,000** people

## Low-Income Weatherization Assistance Program:

**4,000** households



## Community Partnerships:

**515,000** people

## Energy Assistance:

**135,000** households

## Energy Crisis Intervention Program:

**78,000** households

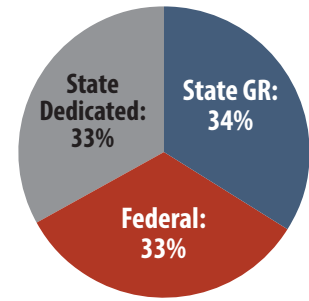
This primer is intended to serve as a guide for Missourians who care about family and community support programs, and increase the transparency of the budget by providing information on where key programs can be found in the budget bills. **Amounts included are Appropriated and reflect Gubernatorial vetoes, but not any mid-year restrictions that may have been made.**

The vast majority of family and community support programs are paid for with federal funds – with many programs receiving no state general revenue or earmarked funding at all.

# Budget Basics

Each year the state takes in and spends approximately \$27 billion.

- About one third of the funds come from the federal government for very specific purposes.
- Another third is state revenue dedicated to specific state purposes, like the fuel tax, which is dedicated to transportation.
- Lawmakers have the most authority to allocate the final third, referred to as General Revenue.



Family and community support programs in Missouri are housed within:

- Department of Social Services (DSS) – Family Support Division [HB 11]
- Department of Health & Senior Services (DHSS) – Division of Community and Public Health [HB 10]

In order to track appropriations for a specific program, one must locate the appropriate budget bill and section number. (available at <https://oa.mo.gov/budget-planning/>)

Section # 11.235

The digits before the decimal indicate the bill number.

The numbers after the decimal show the section of that budget bill

See Appendix for a detailed list of specific family and community support programs, relevant section numbers, and FY2018 funding levels and sources.

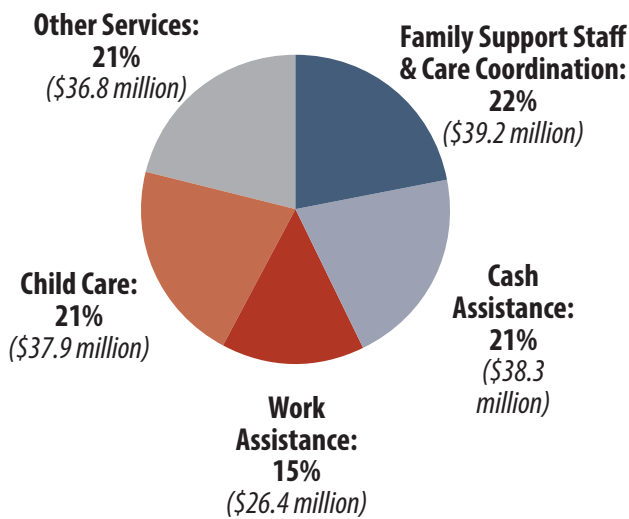
**Unless otherwise noted, all data on funding levels & sources, eligibility criteria, and program enrollment & efficacy were obtained from the 2019 Department Budget Requests through the Office of Administration, Division of Budget Planning**  
<https://oa.mo.gov/>.

# Cash Assistance

**Temporary Assistance for Needy Families (TANF)** provides cash assistance to families with children based on income and family size for a period not to exceed 45 months total in a lifetime with some exceptions due to age, disability, and hardship. Cash assistance accounts for \$38m (21%) in federal TANF funds while an additional \$26m (15%) transitional work assistance for recipients. The remaining TANF funds are sprinkled throughout the family supports budget in order to fund programs that advance the purpose of the TANF program, including child care, mentoring/after school programs, job training and work supports, and child welfare services.

**Cash assistance helped support 12,032 Missouri families with 21,431 children in September 2017.  
The average monthly payment that month was \$225.96 per family.<sup>2</sup>**

## Missouri FY 2018 Federal TANF Block Grant Spending

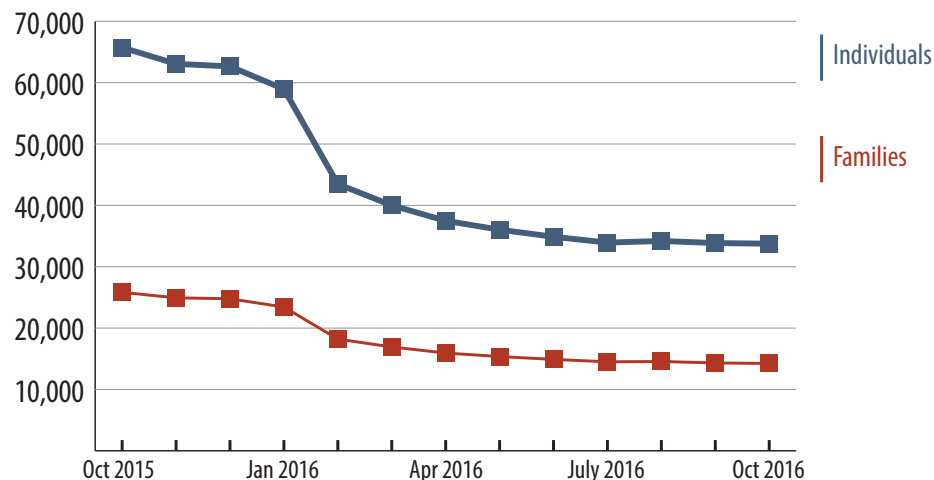


### Senate Bill 24:

- Passed in 2015 and implemented January 1, 2016.
- Decreased the lifetime limit that families could receive assistance from 60 months to 45 months, and implemented full-family sanctions.
- Nearly 20,000 children lost assistance between January and October of 2016.

## Total Number of Families & Individuals Receiving TANF Cash Assistance

Monthly, October 2015 - October 2016



## Energy Assistance

The federal government provides funding for energy assistance programs that provide limited financial assistance to help low-income Missouri families, seniors and people with disabilities with the costs of heating and cooling their homes in order to reduce the health and safety risks associated with disconnection of utility services.

**Missouri’s Low Income Home Energy Assistance Program (LIHEAP)** is administered primarily through contracts with Community Action Agencies and other nonprofits across Missouri and provides:

**Energy Assistance (EA)** is used primarily to make direct payments to energy providers in order to maintain heating and cooling services for the families who are eligible for assistance. Assistance is targeted toward low income households with high energy costs. Homes with seniors, children under six, and the disabled are prioritized.

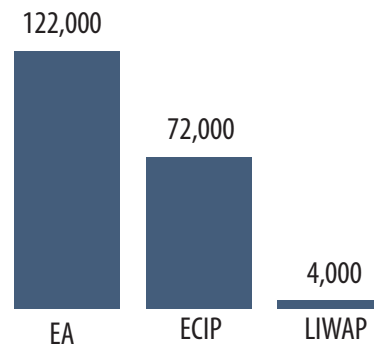
**Energy Crisis Intervention Program (ECIP)** is used to make direct payments to energy providers to avoid the disconnection of or to reconnect utilities.

### LIHEAP Income Requirements

Size of Family Unit	Monthly
1	\$1,357
2	\$1,827
3	\$2,297
4	\$2,768

Recipients of LIHEAP must have household income < 135% FPL and cannot have assets that value more than \$3,000.<sup>3</sup>

**Number of Households Assisted by  
LIHEAP & LIWAP**  
Projections for FY 2018



**The Low-Income Weatherization Assistance Program (LIWAP)** provides financial assistance to low income households to assist in reducing utility costs through home weatherization. Ten percent of energy assistance funding is allocated to LIWAP which is administered through the Department of Economic Development.

**A projected 4,000 individuals will receive LIWAP services in FY2018.**

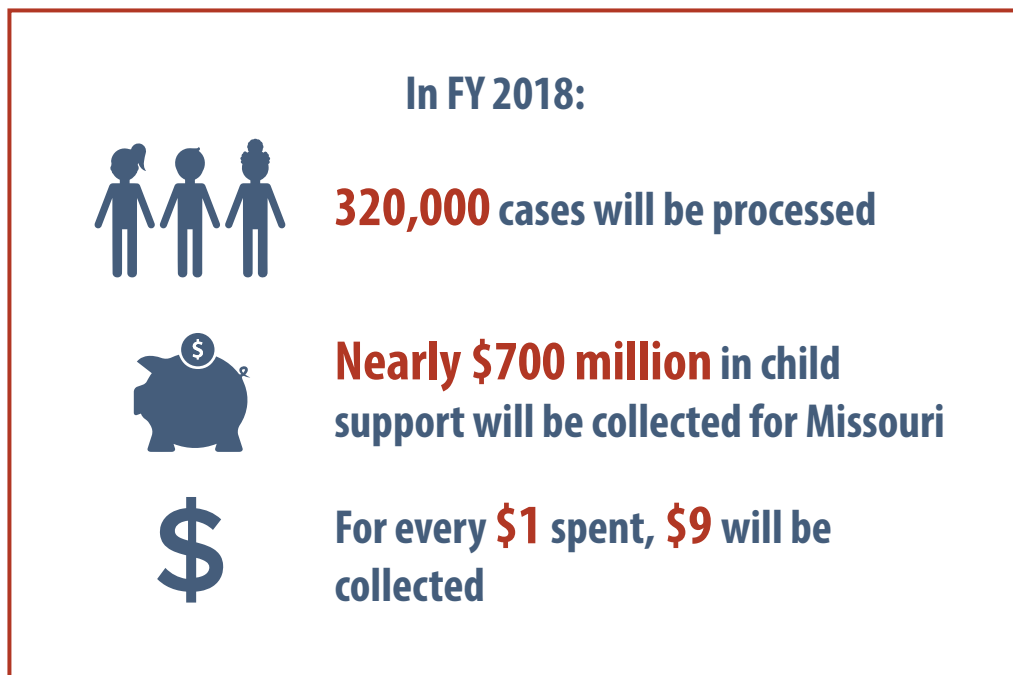
**Utilicare Program**, which supplements Missouri’s LIHEAP Program, was not funded in FY2018.

## Child Support

**Child Support Programs** are charged with collecting financial support for children through a range of programs including:

- paternity establishment
- establishment, modification, and enforcement of child support orders
- mediation services

The child support program is also charged with securing private health care coverage information, establishing and enforcing medical support obligations for children and assisting with efforts to contain MO HealthNet costs by identifying possible third parties liable for medical costs.



# Community Supports

## Community Partnerships

Missouri has twenty **Community Partnerships** that work to bring together existing community organizations in order to design, implement, and evaluate community strategies to ensure the safety and health of individuals in their communities in addition to promoting school readiness and success. The network of community partnerships covers the entire state and is funded primarily with federal dollars.

**The community partnerships are projected to serve 515,000 individuals in FY2018.**

Community Partnerships core areas of focus are to:

- Keep children and families safe and healthy.
- Prepare children to enter and succeed in school.
- Train and prepare parents and teens to enter and remain in the workforce.

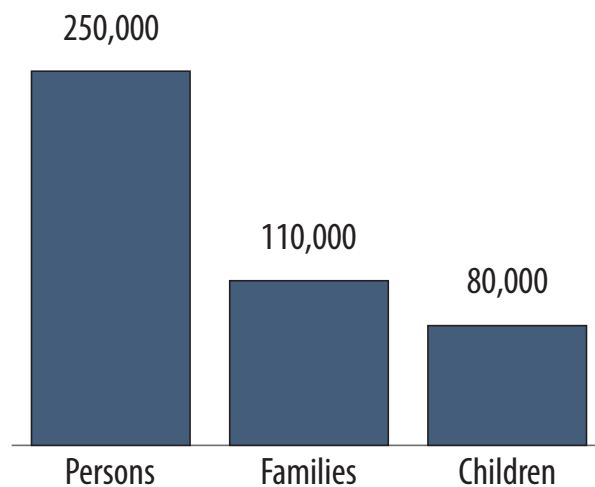
## Community Action Agencies

Missouri has nineteen **Community Action Agencies (CAAs)** that work to reduce poverty, revitalize low-income communities, and to empower low-income families and individuals to become self-sufficient. This network of CAAs serves the entire state with funding obtained primarily through the Federal Community Services Block Grant (CSBG). Activities serve to reduce unemployment and malnutrition, and address inadequate education, housing, and income.

**The CAAs are projected to serve 250,000 individuals in FY2018.**

### Individuals Served by CAAs

Projected, FY2018



## Family Stabilization

A range of programs exist that promote healthy and stable families. These programs include:

**Healthy marriage/fatherhood programs** help connect fathers with resources to help provide financial assistance to their children, establish legal paternity, and actively participate in caregiving tasks.

**Domestic violence programs** provide funding for domestic violence shelters and programs throughout the state. These shelters provide housing and supportive services for victims of domestic violence and their children. **In 2016, the domestic violence program sheltered 5,919 women and 4,879 children. Over 19,130 individuals were turned away because shelters were full.**

**The Sexual Assault Program** provides funding to programs that assist victims age 14 and up who have experienced sexual assault. The programs provide support services including therapy, support groups, hotlines, and medical and legal advocacy.

**Emergency Solutions Grant Program** provides emergency shelter for Missourians who are homeless, services to prevent homelessness, and services to rapidly re-house those that become homeless. **This program will serve 7,000 adults and 4,000 children.**

**Refugee Assistance** consists of several programs designed to help refugees become self-sufficient, productive citizens within the shortest possible time. The Refugee Assistance program provides several services including daycare for children, English as a Second Language, and job placement services. **In FY2018, 3,200 refugees will receive assistance in learning English while 800 will receive job placement services.**



## APPENDIX

Amounts shown are Appropriated and reflect Governorial vetoes, but do not include any mid-year restrictions that may have been made.

Program	Department Budget	Budget Section	FY18 GR	FY18 Federal	FY18 Other	FY18 TOTAL
TANF	DSS	11.115	\$9,712,354	\$82,402,199	\$0	\$92,114,553
Healthcare Industry Training	DSS	11.110	\$0	\$3,000,000	\$0	\$3,000,000
Energy Assistance	DSS	11.160	\$0	\$77,547,867	\$0	\$77,547,867
Utillacare	DSS	11.160	\$0	\$0	\$0	\$0
Community Partnerships	DSS	11.100	\$632,328	\$7,603,799	\$0	\$8,236,127
Community Services Block Grant (CAAs)	DSS	11.145	\$0	\$23,637,000	\$0	\$23,637,000
Child Support Field Staff and Operations	DSS	11.190	\$6,830,943	\$23,294,757	\$3,725,973	\$33,851,673
Child Support Reimbursement to Counties	DSS	11.195	\$2,240,491	\$14,886,582	\$400,212	\$17,527,285
Healthy Marriage/ Fatherhood	DSS	11.120	\$0	\$1,500,000	\$0	\$1,500,000
Domestic Violence	DSS	11.165	\$5,000,000	\$3,716,524	\$0	\$8,716,524
Assist Victims of Sexual Assault	DSS	11.180	\$750,000	\$0	\$0	\$750,000

Program	Department Budget	Budget Section	FY18 GR	FY18 Federal	FY18 Other	FY18 TOTAL
Emergency Shelter Domestic Violence	DSS	11.165	\$0	\$562,137	\$0	\$562,137
Emergency Solutions Grant Program	DSS	11.150	\$0	\$4,130,000	\$0	\$4,130,000
Victims of Crime Act	DSS	11.167	\$0	\$37,273,626	\$0	\$37,273,626
Refugee Assistance	DSS	11.140	\$0	\$3,806,226	\$0	\$3,806,226
Family Support Administration	DSS	11.065	\$1,377,841	\$16,237,722	\$564,663	\$18,180,226
Income Maintenance Field Staff and Operations	DSS	11.070	\$18,051,637	\$63,443,847	\$840,605	\$82,336,089
Income Maintenance & Family Support Staff Training	DSS	11.075	\$113,693	\$133,974	\$0	\$247,667
Electronic Benefits Transfer (EBT)	DSS	11.080	\$1,796,622	\$1,546,747	\$0	\$3,343,369
FAMIS	DSS	11.090	\$575,453	\$1,222,371	\$0	\$1,797,824
Eligibility and Enrollment System	DSS	11.095	\$7,566,986	\$63,459,631	\$1,000,000	\$72,026,617

**NOTE: Many of the programs outlined in this primer funded through multiple sources in the budget and cross multiple budget sections. As such, the amounts provided in this Appendix should not be totaled to obtain a total cost of family and community supports as this would overstate the amount spent on these programs in the budget.**

Some programs in this primer (such as FAMIS & the Eligibility and Enrollment System) provide administration for programs not covered in this primer, including Child Care Assistance and Medicaid.

## Notes

1. Missouri Department of Social Services, “Family Support Division, MO HealthNet Division, Monthly Management Report,” September 2017
2. Ibid.
3. Missouri Department of Social Services. Available: <https://dss.mo.gov/fsd/energy-assistance/>